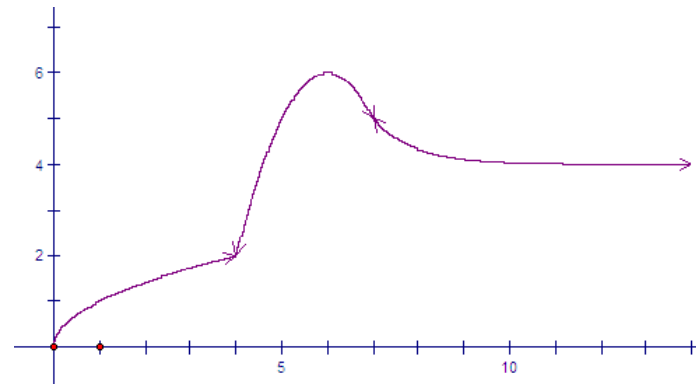
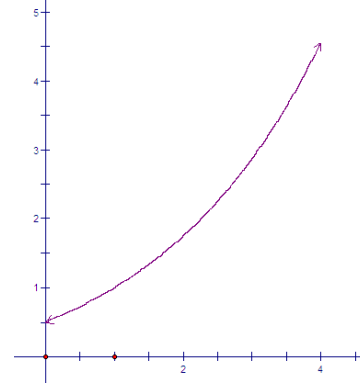
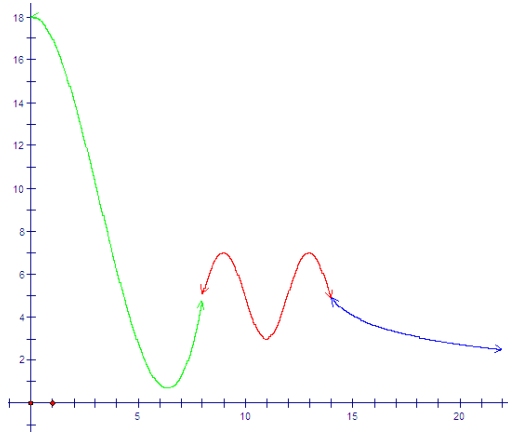


## It's a little more complicated

1. Write precise description of the following distance/time graphs. Identify and describe

- Intervals of increase/decrease
- Local and overall Maximums and Minimums
- The corresponding Speed/Time graph



2. Draw a graph that depicts ONE of the following situations

- Swimming laps in a pool
- Riding a bicycle on uneven terrain (must go uphill, downhill, and on a flat)
- Filling a bathtub with water.

For each graph, describe

- Intervals of increase/decrease
- Maximums and Minimums
- The corresponding Speed/Time graph